



AVELEY PRIMARY SCHOOL

An Independent Public School

(ABN 29 985 456 130)

8 Bolero Road, Aveley, WA 6069

Dear Parent/Carers,

On Friday, 24 July, Year 2-6 students will be participating in the Aveley Primary School House Cross Country. The event is designed to encourage participation to the best of one's abilities through a sustained run. Parents and students are asked to take note of the following details. Please note times and year groups are approximate and are subject to change on the day.

Date: Friday, 24 July 2020 (Term 3, Week 1)

Venue: Aveley Primary School Community Oval

Time: Please note below times are approximate

Year Group	Start Time	Distance
Year 2	11:15am	650m
Year 3	11:40am	1.5km
Year 4	12:20pm	1.5km
Year 5	1:50pm	1.8km
Year 6	2:20pm	1.8km

Students will need to bring: School hat and water bottle. Medication requirements will be managed by staff. Students are encouraged to show team spirit by wearing their house shirt.

Pegasus – Yellow

Aquila – Blue

Phoenix – Red

Orion – Green

Interschool Selection:

Students that place 1st – 10th will be invited to represent the school at the EISA Cross Country Carnival, held in Week 3 of the term.

Events like these, cannot run without the generous support of parents. We need 10 parent helpers to assist with the running of the event. If you are able to assist on the day in any capacity, please fill out the form attached and return it to the front office.

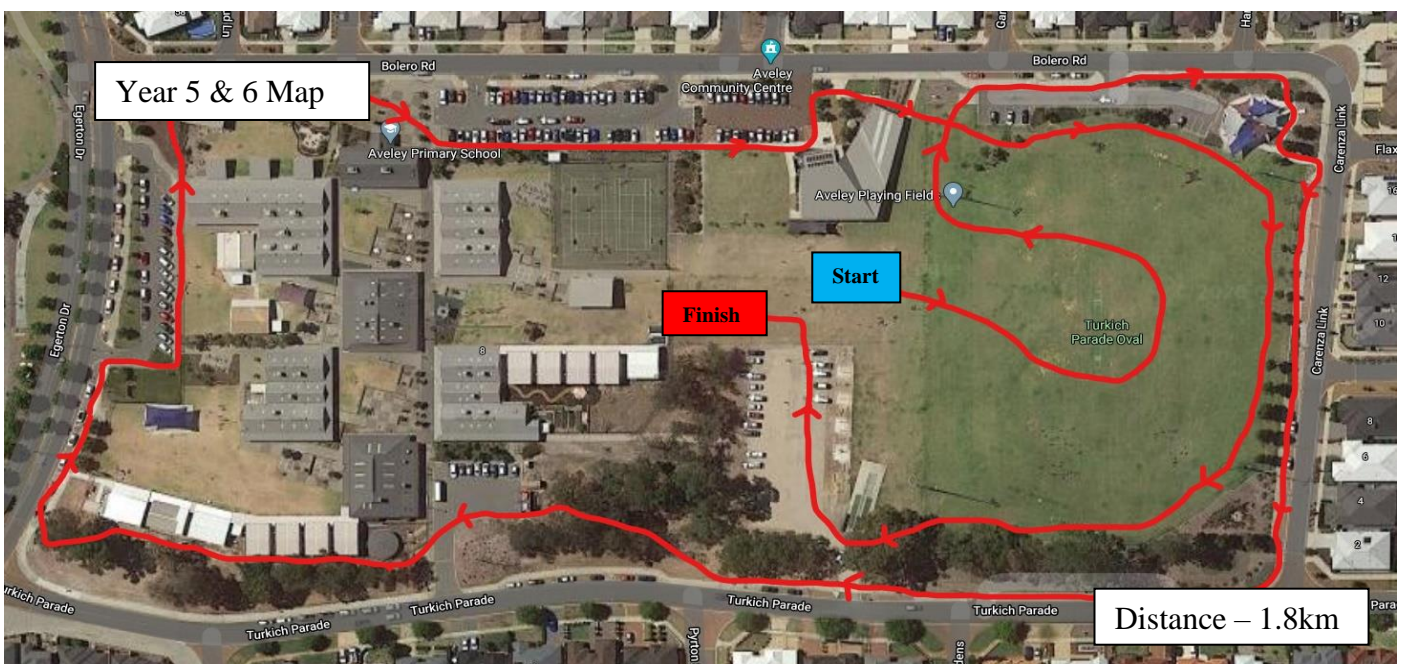
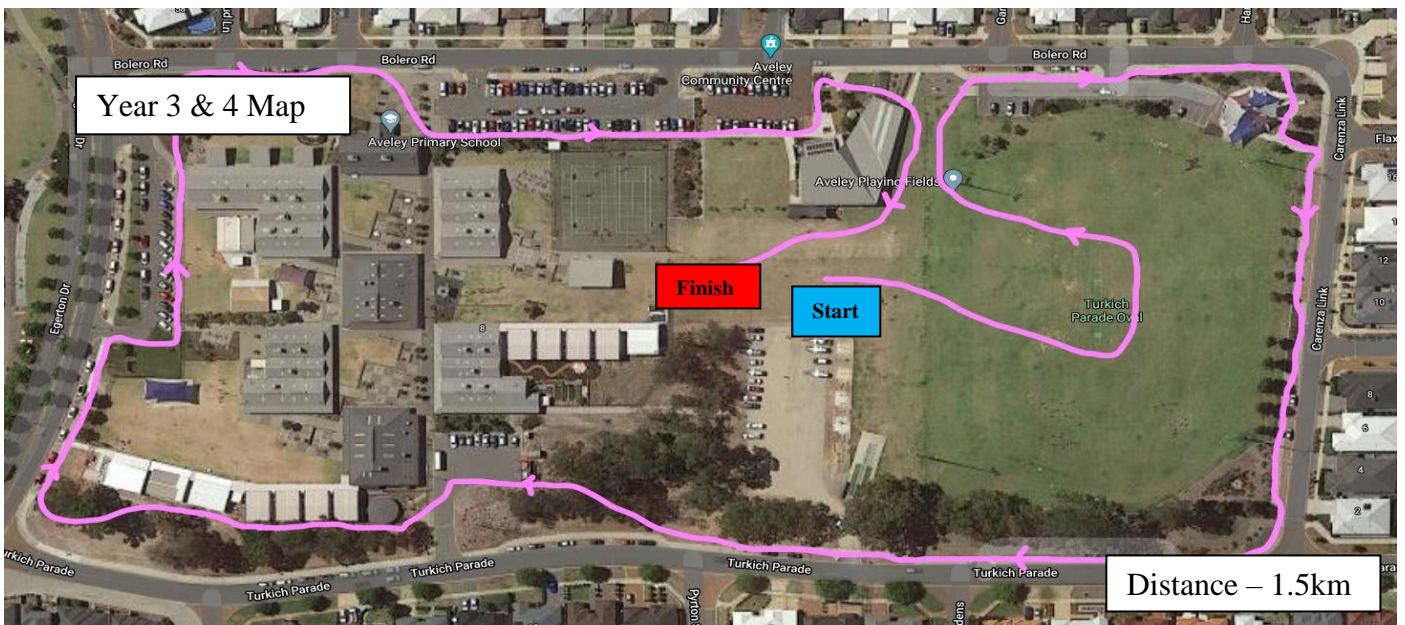
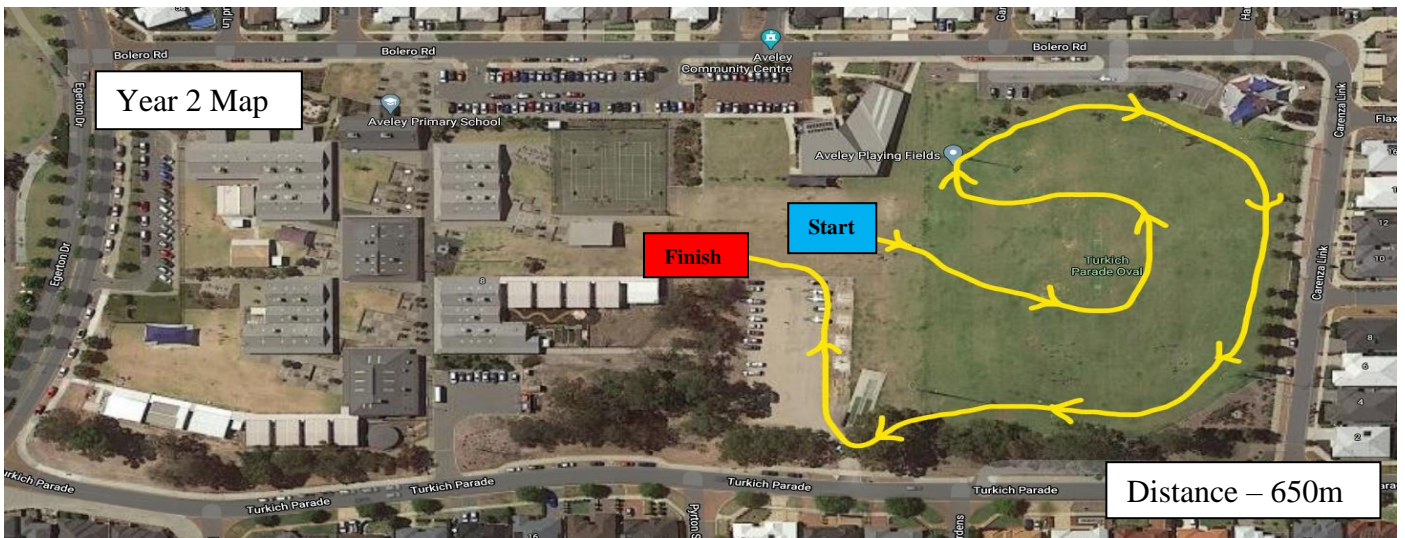
Yours sincerely

Brendan Fung
PE TEACHER

E: Brendan.Fung@education.wa.edu.au

24 June 2020

COURSE MAPS





AVELEY PRIMARY SCHOOL

An Independent Public School

(ABN 29 985 456 130)

8 Bolero Road, Aveley, WA 6069

PARENT HELPERS

Parent helpers are required for the Cross Country event to go ahead. If you are available to help, could you please complete the form and return it to the front office.

I am able to help with the Aveley Primary School House Cross Country event on Friday, 24 July 2020.

Name: _____

Mobile No: _____

Email: _____

Please indicate when you are available, you are able to tick more than one box:

Morning setup

Year 2 event

Year 3 event

Year 4 event

Year 5 event

Year 6 event

All day